

# An implementation of a randomized algorithm for principal component analysis

Arthur Szlam, Facebook Artificial Intelligence Research  
Yuval Kluger, Yale University Department of Pathology  
Mark Tygert, Facebook Artificial Intelligence Research and Yale University

Recent years have witnessed intense development of randomized methods for low-rank approximation. These methods target principal component analysis (PCA) and the calculation of truncated singular value decompositions (SVD). The present paper presents an essentially black-box, fool-proof implementation for Mathworks' MATLAB, a popular software platform for numerical computation. As illustrated via several tests, the randomized algorithms for low-rank approximation outperform or at least match the classical techniques (such as Lanczos iterations) in basically all respects: accuracy, computational efficiency (both speed and memory usage), ease-of-use, parallelizability, and reliability. However, the classical procedures remain the methods of choice for estimating spectral norms, and are far superior for calculating the least singular values and corresponding singular vectors (or singular subspaces).

Categories and Subject Descriptors: Mathematics of Computing [**Mathematical Software**]: Statistical Software

General Terms: Algorithms, Performance

Additional Key Words and Phrases: principal component analysis, PCA, singular value decomposition, SVD

## ACM Reference Format:

Arthur Szlam, Yuval Kluger, and Mark Tygert, 2014. An implementation of a randomized algorithm for principal component analysis. *ACM Trans. Math. Softw.* 1, 1, Article 1 (December 2014), 13 pages.  
DOI : <http://dx.doi.org/10.1145/0000000.0000000>

## 1. INTRODUCTION

Randomized algorithms for low-rank approximation in principal component analysis and singular value decomposition have drawn a remarkable amount of attention in recent years, as summarized in the review of Halko et al. [2011]. The present paper describes developments that have led to an essentially black-box, fool-proof MATLAB implementation of these methods, and benchmarks the implementation against the standards. For applications to principal component analysis, the performance of the randomized algorithms run under their default parameter settings meets or exceeds (often exceeding extravagantly) the standards'. In contrast to the existing standards, the randomized methods are gratifyingly easy to use, rapidly and reliably producing nearly optimal accuracy without extensive tuning of parameters (in accordance with guarantees that rigorous proofs provide). The present paper concerns implementations

---

This work was supported in part by a US DoD DARPA Young Faculty Award and US NIH Grant R01 CA158167.

Author's addresses: A. Szlam, Facebook, 8th floor, 770 Broadway, New York, NY 10003; Y. Kluger, Yale University, School of Medicine, Department of Pathology, Suite 505F, 300 George St., New Haven, CT 06511; M. Tygert, Facebook, 1 Hacker Way, Menlo Park, CA 94025

Permission to make digital or hard copies of part or all of this work for personal or classroom use is granted without fee provided that copies are not made or distributed for profit or commercial advantage and that copies show this notice on the first page or initial screen of a display along with the full citation. Copyrights for components of this work owned by others than ACM must be honored. Abstracting with credit is permitted. To copy otherwise, to republish, to post on servers, to redistribute to lists, or to use any component of this work in other works requires prior specific permission and/or a fee. Permissions may be requested from Publications Dept., ACM, Inc., 2 Penn Plaza, Suite 701, New York, NY 10121-0701 USA, fax +1 (212) 869-0481, or [permissions@acm.org](mailto:permissions@acm.org).

© 2014 ACM 0098-3500/2014/12-ART1 \$15.00

DOI : <http://dx.doi.org/10.1145/0000000.0000000>

for MATLAB; a related development is the C++ package “libSkylark” of Avron et al. [2014]. Please beware that the randomized methods on their own are ill-suited for calculating small singular values and the corresponding singular vectors (or singular subspaces), including ground states and corresponding energy levels of Hamiltonian systems; the present article focuses on principal component analysis involving low-rank approximations.

The present paper has the following structure: Section 2 outlines the randomized methods. Section 3 stabilizes an accelerated method for nonnegative-definite self-adjoint matrices. Section 4 details subtleties involved in measuring the accuracy of low-rank approximations. Section 5 tweaks the algorithms to improve the performance of their implementations. Section 6 discusses some issues with one of the most popular existing software packages. Section 7 tests the different methods on dense matrices. Section 8 tests the methods on sparse matrices. Section 9 draws several conclusions.

## 2. OVERVIEW

The present section sketches randomized methods for singular value decomposition (SVD) and principal component analysis (PCA). The definitive treatment — that of Halko et al. [2011] — gives details, complete with guarantees of superb accuracy; see also the sharp analysis of Witten and Candès [2014] and the new work of Woodruff [2014] and others. PCA is the same as the SVD, possibly after subtracting from each column its mean and otherwise normalizing the columns (or rows) of the matrix being approximated.

PCA is most useful when the greatest singular values are reasonably greater than those in the tail. Suppose that  $k$  is a positive integer that is substantially less than both dimensions of the matrix  $A$  being analyzed, such that the  $k$  greatest singular values include the greatest singular values of interest. The main output of PCA would then be a good rank- $k$  approximation to  $A$  (perhaps after centering or otherwise normalizing the columns or rows of  $A$ ). The linear span of the columns of this rank- $k$  approximation is an approximation to the range of  $A$ . Given that  $k$  is substantially less than both dimensions of  $A$ , the approximate range is relatively low dimensional.

Shortly we will discuss an efficient construction of  $k$  orthonormal vectors that nearly span the range of  $A$ ; such vectors enable the efficient construction of an approximate SVD of  $A$ , as follows. Denoting by  $Q$  the matrix whose columns are these vectors, the orthogonal projector on their span is  $QQ^*$  (where  $Q^*$  denotes the adjoint — the conjugate transpose — of  $Q$ ), and so

$$A \approx QQ^*A, \quad (1)$$

since this orthogonal projector nearly preserves the range of  $A$ . Because the number  $k$  of columns of  $Q$  is substantially less than both dimensions of  $A$ , we can efficiently compute

$$B = Q^*A, \quad (2)$$

which has only  $k$  rows. We can then efficiently calculate an SVD

$$W\Sigma V^* = B, \quad (3)$$

where the columns of  $W$  are orthonormal, as are the columns of  $V$ , and  $\Sigma$  is a diagonal  $k \times k$  matrix whose entries are all nonnegative. Constructing

$$U = QW \quad (4)$$

and combining formulae (1)–(4) then yields the SVD

$$U\Sigma V^* \approx A. \quad (5)$$

If  $k$  is substantially less than both dimensions of  $A$ , then  $A$  has far more entries than any other matrix in the above calculations.

Thus, provided that we can efficiently construct  $k$  orthonormal vectors that nearly span the range of  $A$ , we can efficiently construct an SVD that closely approximates  $A$  itself (say, in the sense that the spectral norm of the difference between  $A$  and the approximation to  $A$  is small relative to the spectral norm of  $A$ ). In order to identify vectors in the range of  $A$ , we can apply  $A$  to random vectors — after all, the result of applying  $A$  to any vector is a vector in the range of  $A$ . If we apply  $A$  to  $k$  random vectors, then the results will nearly span the range of  $A$ , with extremely high probability (and the probability of capturing most of the range is even higher if we apply  $A$  to a few extra random vectors). Rigorous mathematical proofs (given by Halko et al. [2011] and by Witten and Candès [2014], for example) show that the probability of missing a substantial part of the range of  $A$  is negligible, so long as the vectors to which we apply  $A$  are sufficiently random (which is so if, for example, the entries of these vectors are independent and identically distributed — i.i.d. — each drawn from a standard normal distribution). Since the results of applying  $A$  to these random vectors nearly span the range of  $A$ , applying the Gram-Schmidt process (or other methods for constructing QR decompositions) to these results yields an orthonormal basis for the approximate range of  $A$ , as desired.

This construction is particularly efficient whenever  $A$  can be applied efficiently to arbitrary vectors, and is always easily parallelizable since the required matrix-vector multiplications are independent of each other. The construction of  $B$  in formula (2) requires further matrix-vector multiplications, though there exist algorithms for the SVD of  $A$  that avoid explicitly constructing  $B$  altogether, via the application of  $A^*$  to random vectors, identifying the range of  $A^*$ . The full process is especially efficient when both  $A$  and  $A^*$  can be applied efficiently to arbitrary vectors, and is always easily parallelizable. Further accelerations are possible when  $A$  is self-adjoint (and even more when  $A$  is nonnegative definite).

If the singular values of  $A$  decay slowly, then the accuracy of the approximation in formula (5) may be lower than desired; the long tail of singular values that we are trying to neglect may pollute the results of applying  $A$  to random vectors. To suppress this tail of singular values relative to the singular values of interest (the leading  $k$  are those of interest), we may identify the range of  $A$  by applying  $AA^*A$  rather than  $A$  itself — the range of  $AA^*A$  is the same as the range of  $A$ , yet the tail of singular values of  $AA^*A$  is lower (and decays faster) than the tail of singular values of  $A$ , relative to the singular values of interest. Similarly, we may attain even higher accuracy by applying  $A$  and  $A^*$  in succession to each of the random vectors multiple times. The accuracy obtained thus approaches the best possible exponentially fast, as proven by Halko et al. [2011].

In practice, we renormalize after each application of  $A$  or  $A^*$ , to avoid problems due to floating-point issues such as roundoff or dynamic range (overflow and underflow). The renormalized methods resemble the classical subspace or power iterations (QR or LR iterations) widely used for spectral computations, as reviewed by Golub and Van Loan [2012]. Our MATLAB codes — available at <http://tygert.com/software.html> — provide full details, complementing the summary in Section 5 below.

### 3. STABILIZING THE NYSTRÖM METHOD

Enhanced accuracy is available when the matrix  $A$  being approximated has special properties. For example, Algorithm 5.5 (the “Nyström method”) of Halko et al. [2011] proposes the following scheme for processing a nonnegative-definite self-adjoint matrix  $A$ , given a matrix  $Q$  satisfying formula (1), that is,  $A \approx QQ^*A$ , such that the columns of  $Q$  are orthonormal:

Form

$$B_1 = AQ. \quad (6)$$

Construct

$$B_2 = Q^* B_1. \quad (7)$$

Compute a triangular matrix  $C$  for the Cholesky decomposition

$$C^* C = B_2. \quad (8)$$

By solving linear systems of equations, construct

$$F = B_1 C^{-1} = ((C^*)^{-1} B_1^*)^*. \quad (9)$$

Compute the SVD

$$USV^* = F, \quad (10)$$

where the columns of  $U$  are orthonormal, the columns of  $V$  are also orthonormal,  $S$  is diagonal, and all entries of  $S$  are nonnegative. Set

$$\Sigma = S^2. \quad (11)$$

Then (as demonstrated by Halko et al. [2011])  $A \approx U\Sigma U^*$ , and the accuracy of this approximation should be better than that obtained using formulae (2)–(4).

Unfortunately, this procedure can be numerically unstable. Even if  $A$  is self-adjoint and nonnegative-definite,  $B_2$  constructed in (7) may not be strictly positive definite (especially with roundoff errors), as required for the Cholesky decomposition in (8). To guarantee numerical stability, we need only replace the triangular matrix for the Cholesky decomposition in (8) from formulae (6)–(11) with the calculation of a self-adjoint square-root  $C$  of  $B_2$ , that is, with the calculation of a self-adjoint matrix  $C$  such that

$$C^2 = B_2. \quad (12)$$

The SVD of  $B_2$  provides a convenient means for computing the self-adjoint square-root  $C$ . Technically, the inverse in formula (9) should become a (regularized) pseudoinverse, or, rather, should construct backwardly stable solutions to the associated systems of linear equations.

Replacing the Cholesky factor with the self-adjoint square-root is only one possibility for guaranteeing numerical stability. Our MATLAB codes instead add (and subtract) an appropriate multiple of the identity matrix to ensure strict positive definiteness for the Cholesky decomposition. This alternative is somewhat more efficient, but its implementation is more involved. The simpler approach via the self-adjoint square-root should be sufficient in most circumstances.

#### 4. MEASURING ACCURACY

For most applications of principal component analysis, the spectral norm of the discrepancy,  $\|A - U\Sigma V^*\|$ , where  $U\Sigma V^*$  is the computed approximation to  $A$ , is the most relevant measure of accuracy. The spectral norm  $\|H\|$  of a matrix  $H$  is the maximum value of  $|Hx|$ , maximized over every vector  $x$  such that  $|x| = 1$ , where  $|Hx|$  and  $|x|$  denote the Euclidean norms of  $Hx$  and  $x$  (the spectral norm of  $H$  is also equal to the greatest singular value of  $H$ ). The spectral norm is unitarily invariant, meaning that its value is the same with respect to any unitary transformation of the rows or any unitary transformation of the columns — that is, the value is the same with regard to any orthonormal basis of the domain and to any orthonormal basis of the range or codomain [Golub and Van Loan 2012].

If the purpose of a principal component analysis is to facilitate dimension reduction, denoising, or calibration, then the effectiveness of the approximation at reconstructing the original matrix is the relevant metric for measuring accuracy. This would favor measuring accuracy as the size of the difference between the approximation and the matrix being approximated, as in the spectral-norm discrepancy, rather than via direct assessment of the accuracy of singular values and singular vectors. The spectral norm is a uniformly continuous function of the matrix entries of the discrepancy, unlike the relative accuracy of singular values (the relative accuracy of an approximation  $\tilde{\sigma}$  to a singular value  $\sigma$  is  $|\tilde{\sigma} - \sigma|/\sigma$ ); continuity means that the spectral norm is stable to small perturbations of the entries [Golub and Van Loan 2012].

The Frobenius norm of the difference between the approximation and the matrix being approximated is unitarily invariant as is the spectral norm, and measures the size of the discrepancy as does the spectral norm (the Frobenius norm is the square root of the sum of the squares of the matrix entries) [Golub and Van Loan 2012]. The spectral norm is generally preferable for big data subject to noise, however, as argued by McSherry and Achlioptas [2007]. Noise often manifests as a long tail of singular values which individually are much smaller than the leading singular values but whose total energy may approach or even exceed the leading singular values'. For example, the singular values for a signal corrupted by white noise flatten out sufficiently far out in the tail [Alliance for Telecommunications Industry Solutions Committee PRQC 2011]. The sum of the squares of the singular values corresponding to white noise or to pink noise diverges with the addition of further singular values as the dimensions of the matrix increase [Alliance for Telecommunications Industry Solutions Committee PRQC 2011]. The square root of the sum of the squares of the singular values in the tail thus overwhelms the leading singular values for big matrices subject to white or pink noise (as well as for other types of noise). Such noise can mask the contribution of the leading singular values to the Frobenius norm (that is, to the square root of the sum of squares); the “signal” has little effect on the Frobenius norm, as this norm depends almost entirely on the singular values corresponding to “noise.”

Since the Frobenius norm is the square root of the sum of the squares of *all* entries, the Frobenius norm throws together all the noise from all directions. Of course, noise afflicts the spectral norm, too, but only the noise in one direction at a time — noise from noisy directions does not corrupt a direction that has a high signal-to-noise ratio. The spectral norm can detect and extract a signal so long as the singular values corresponding to signal are greater than each of the singular values corresponding to noise; in contrast, the Frobenius norm can detect the signal only when the singular values corresponding to signal are greater than the square root of the *sum* of the squares of *all* singular values corresponding to noise. Whereas the individual singular values may not get substantially larger as the dimensions of the matrix increase, the sum of the squares may become troublingly large in the presence of noise. With big data, noise may overwhelm the Frobenius norm. In the words of Joel A. Tropp, Frobenius-norm accuracy may be “vacuous” in a noisy environment. The spectral norm is comparatively robust to noise.

To summarize, a long tail of singular values that correspond to noise or are otherwise unsuitable for designation as constituents of the “signal” can obscure the signal of interest in the leading singular values and singular vectors, when measuring accuracy via the Frobenius norm. Principal component analysis is most useful when retaining only the leading singular values and singular vectors, and the spectral norm is then more informative than the Frobenius norm.

Fortunately, estimating the spectral norm is straightforward and reliable using the power method with a random starting vector. Theorem 4.1(a) of Kuczyński and Woźniakowski [1992] proves that the computed estimate lies within a factor of two of

the exact norm with overwhelmingly high probability, and the probability approaches 1 exponentially fast as the number of iterations increases. The guaranteed lower bound on the probability of success is independent of the structure of the spectrum; the bound is highly favorable even if there are no gaps between the singular values. Estimating the spectral-norm discrepancy via the randomized power method is simple, reliable, and highly informative.

## 5. ALGORITHMIC OPTIMIZATIONS

The present section describes several improvements effected in our MATLAB codes beyond the recommendations of Halko et al. [2011].

As Shabat et al. [2013] observed, computing the LU decomposition is typically more efficient than computing the QR decomposition, and both are sufficient for most stages of the randomized algorithms for low-rank approximation. Our MATLAB codes use LU decompositions whenever possible. For example, given some number of iterations, say  $its = 4$ , and given an  $n \times k$  random matrix  $Q$ , the core iterations in the case of a self-adjoint  $n \times n$  matrix  $A$  are

```
for it = 1:its
    Q = A*Q;
    if(it < its)
        [Q,R] = lu(Q);
    end
    if(it == its)
        [Q,R,E] = qr(Q,0);
    end
end
```

In all but the last of these iterations, an LU decomposition renormalizes  $Q$  after the multiplication with  $A$ . In the last iteration, a pivoted QR decomposition renormalizes  $Q$ , ensuring that the columns of the resulting  $Q$  are orthonormal. Incidentally, since the initial matrix  $Q$  was random, pivoting in the QR decomposition is not necessary; replacing the line “[Q,R,E] = qr(Q,0)” with “[Q,R] = qr(Q,0)” sacrifices little in the way of numerical stability.

A little care in the implementation ensures that the same code can efficiently handle both dense and sparse matrices. For example, if  $c$  is the  $1 \times n$  vector whose entries are the means of the entries in the columns of an  $m \times n$  matrix  $A$ , then the MATLAB code  $Q = A*Q - \text{ones}(m,1)*(c*Q)$  applies the mean-centered  $A$  to  $Q$ , without ever forming all entries of the mean-centered  $A$ . Similarly, the MATLAB code  $Q = (Q'*A)'$  applies the adjoint of  $A$  to  $Q$ , without ever forming the adjoint of  $A$  explicitly, while taking full advantage of the storage scheme for  $A$  (column-major ordering, for example).

Since the algorithms are robust to the quality of the random numbers used, we can use the fastest available pseudorandom generators, for instance, drawing from the uniform distribution over the interval  $[-1, 1]$  rather than from the normal distribution used in many theoretical analyses.

Another possible optimization is to renormalize only in the odd-numbered iterations (that is, when the variable “it” is odd in the above MATLAB code). This particular acceleration would sacrifice accuracy. However, as Rachakonda et al. [2014] observed,

this strategy can halve the number of disk accesses/seekes required to process a matrix  $A$  stored on disk when  $A$  is not self-adjoint. As our MATLAB codes do not directly support out-of-core calculations, we did not incorporate this additional acceleration, preferring the slightly enhanced accuracy of our codes.

## 6. HARD PROBLEMS FOR PROPACK

PROPACK is a suite of software that can calculate low-rank approximations via remarkable, intricate Lanczos methods, developed by Larsen [2001]. Unfortunately, PROPACK can be unreliable for computing low-rank approximations. For example, using PROPACK's principal routine, "lansvd," under its default settings to process the diagonal matrix whose first three diagonal entries are all 1, whose fourth through twentieth diagonal entries are all .999, and whose other entries are all 0 yields the following wildly incorrect estimates for the singular values 1, .999, and 0:

rank-20 approximation to a  $30 \times 30$  matrix: 1.3718, 1.3593, 1.3386, 1.3099, 1.2733, 1.2293, 1.1780, 1.1201, 1.0560, 1.0000, 1.0000, 1.0000, 0.9990, 0.9990, 0.9990, 0.9990, 0.9990, 0.9990, 0.9990, 0.9990 (all values should be 1 or .999)

rank-21 (with similar results for higher rank) approximation to a  $30 \times 30$  matrix: 1.7884, 1.7672, 1.7321, 1.6833, 1.6213, 1.5466, 1.4599, 1.3619, 1.2537, 1.1361, 1.0104, 1.0000, 1.0000, 1.0000, 0.9990, 0.9990, 0.9990, 0.9990, 0.9990, 0.9990 (this last value should be 0; all others should be 1 or .999)

rank-50 approximation to a  $100 \times 100$  matrix: 1.3437, 1.3431, 1.3422, 1.3409, 1.3392, 1.3372, 1.3348, 1.3321, 1.3289, 1.3255, 1.3216, 1.3174, 1.3128, 1.3079, 1.3027, 1.2970, 1.2910, 1.2847, 1.2781, 1.2710, 1.2637, 1.2560, 1.2480, 1.2397, 1.2310, 1.2220, 1.2127, 1.2031, 1.1932, 1.1829, 1.1724, 1.1616, 1.1505, 1.1391, 1.1274, 1.1155, 1.1033, 1.0908, 1.0781, 1.0651, 1.0519, 1.0385, 1.0248, 1.0110, 1.0000, 1.0000, 1.0000, 0.9990, 0.9990 (the last 30 values should be 0; all others should be 1 or .999)

Full reorthogonalization fixes this — as Rasmus Larsen, the author of PROPACK, communicated to us — but at potentially great cost in computational efficiency.

## 7. PERFORMANCE FOR DENSE MATRICES

We calculate rank- $k$  approximations to an  $m \times n$  matrix  $A$  constructed with specified singular values and singular vectors;  $A = U\Sigma V^*$ , with  $U$ ,  $\Sigma$ , and  $V$  constructed thus: We specify the matrix  $U$  of left singular vectors to be the result of orthonormalizing via the Gram-Schmidt process (or via an equivalent using QR-decompositions)  $m$  vectors, each of length  $m$ , whose entries are i.i.d. Gaussian random variables of zero mean and unit variance. Similarly, we specify the matrix  $V$  of right singular vectors to be the result of orthonormalizing  $n$  vectors, each of length  $n$ , whose entries are i.i.d. Gaussian random variables of zero mean and unit variance. We specify  $\Sigma$  to be the  $m \times n$  matrix whose entries off the main diagonal are all zeros and whose diagonal entries are the singular values  $\sigma_1, \sigma_2, \dots, \sigma_{\min(m,n)}$ . We consider six different distributions of singular values, testing each for two settings of  $m$  and  $n$  (namely  $m = n = 1000$  and  $m = 100, n = 200$ ). The first five distributions of singular values are

$$\sigma_j = 1/j, \quad j = 1, 2, \dots, \min(m, n) \quad (13)$$

$$\sigma_j = \begin{cases} 1, & j = 1 \\ 2 \cdot 10^{-5}, & j = 2, 3, \dots, k \\ 10^{-5} \cdot (k+1)/j, & j = k+1, k+2, \dots, \min(m, n) \end{cases} \quad (14)$$

$$\sigma_j = \begin{cases} 10^{-5(j-1)/(k-1)}, & j = 1, 2, \dots, k \\ 10^{-5} \cdot (k+1)/j, & j = k+1, k+2, \dots, \min(m, n) \end{cases} \quad (15)$$

$$\sigma_j = \begin{cases} 10^{-5(j-1)/(k-1)}, & j = 1, 2, \dots, k \\ 10^{-5}, & j = k + 1 \\ 0, & j = k + 2, k + 3, \dots, \min(m, n) \end{cases} \quad (16)$$

$$\sigma_j = \begin{cases} 10^{-5} + (1 - 10^{-5}) \cdot (k - j)/(k - 1), & j = 1, 2, \dots, k \\ 10^{-5} \cdot \sqrt{(k + 1)/j}, & j = k + 1, k + 2, \dots, \min(m, n) \end{cases} \quad (17)$$

The spectral norm of  $A$  is 1 and the spectral norm of the difference between  $A$  and its best rank- $k$  approximation is  $10^{-5}$  for each of the four preceding examples. For the sixth example, we use for  $\sigma_1, \sigma_2, \dots, \sigma_{\min(m, n)}$  the absolute values of  $\min(m, n)$  i.i.d. Gaussian random variables of zero mean and unit variance.

For each of the four parameter settings displayed in Figure 1 (namely,  $k = 3, m = n = 1000$ ;  $k = 10, m = n = 1000$ ;  $k = 20, m = n = 1000$ ; and  $k = 10, m = 100, n = 200$ ), we plot the spectral-norm errors and runtimes for `pca` (our code), `lansvd` (PROPACK of Larsen [2001]), MATLAB's built-in `svds` (ARPACK of Lehoucq et al. [1998]), and MATLAB's built-in `svd` (LAPACK of Anderson et al. [1999]). For `pca`, we vary the oversampling parameter  $l$  that specifies the number of random vectors whose entries are i.i.d. as  $l = k + 2, k + 4, k + 8, k + 16, k + 32$ ; we leave the parameter specifying the number of iterations at the default, `its = 2`. For `lansvd` and `svds`, we vary the tolerance for convergence as `tol = 10-8, 10-4, 1, 104, 108`, capping the maximum number of iterations to be  $k$  — the minimum possible — when `tol = 108`. Each plotted point represents the averages over ten randomized trials (the plots look similar, but slightly busier, without any averaging). The red asterisks correspond to `pca`, the blue “plus signs” correspond to `lansvd`, the black “times signs” correspond to `svds`, and the green circles correspond to `svd`. Clearly `pca` reliably yields substantially higher performance. Please note that `lansvd` is the closest competitor to `pca`, yet may return entirely erroneous results without warning, as indicated in Section 6.

For reference, the rank of the approximation being constructed is  $k$ , and the matrix  $A$  being approximated is  $m \times n$ . The plotted accuracy is the spectral norm of the difference between  $A$  and the computed rank- $k$  approximation. Each plot in Figure 1 appears twice, with different ranges for the axes.

We also construct rank-4 approximations to an  $n \times n$  matrix  $A$  whose entries are i.i.d. Gaussian random variables of mean  $\sqrt{30/n}$  and variance 1, flipping the sign of the entry in row  $i$  and column  $j$  if  $i \cdot j$  is odd. Such a matrix has two singular values that are roughly twice as large as the largest of the others; without flipping the signs of the entries, there would be only one singular value substantially larger than the others, still producing results analogous to those reported below. For the four settings  $m = n = 100, 1000, 10000, 100000$ , Figure 2 plots the spectral-norm errors and runtimes for `pca` (our code), `lansvd` (PROPACK of Larsen [2001]), and MATLAB's built-in `svds` (ARPACK of Lehoucq et al. [1998]). For `pca`, we use 0, 2, and 4 extra power/subspace iterations (setting `its = 0, 2, 4` in our MATLAB codes), and plot the case of 0 extra iterations separately, as `pca0its`; we leave the oversampling parameter  $l$  specifying the number of random vectors whose entries are i.i.d. at the default,  $l = k + 2$ . For `lansvd` and `svds`, we vary the tolerance for convergence as `tol = 10-2, 1, 108`, capping the maximum number of iterations to be 4 — the minimum possible — when `tol = 108`. The best possible spectral-norm accuracy of a rank-4 approximation is about half the spectral norm  $\|A\|$  (not terribly accurate, yet unmistakably more accurate than approximating  $A$  by, say, a matrix whose entries are all 0). Each plotted point represents the averages over ten randomized trials (the plots look similar, but somewhat busier, without this averaging). The red asterisks correspond to `pca` with `its = 2` or `its = 4`, the blue “plus signs” correspond to `lansvd`, the black “times signs” correspond to `svds`, and the green asterisks correspond to `pca` with `its = 0`, that is, to `pca0its`. The plots omit `svds` for



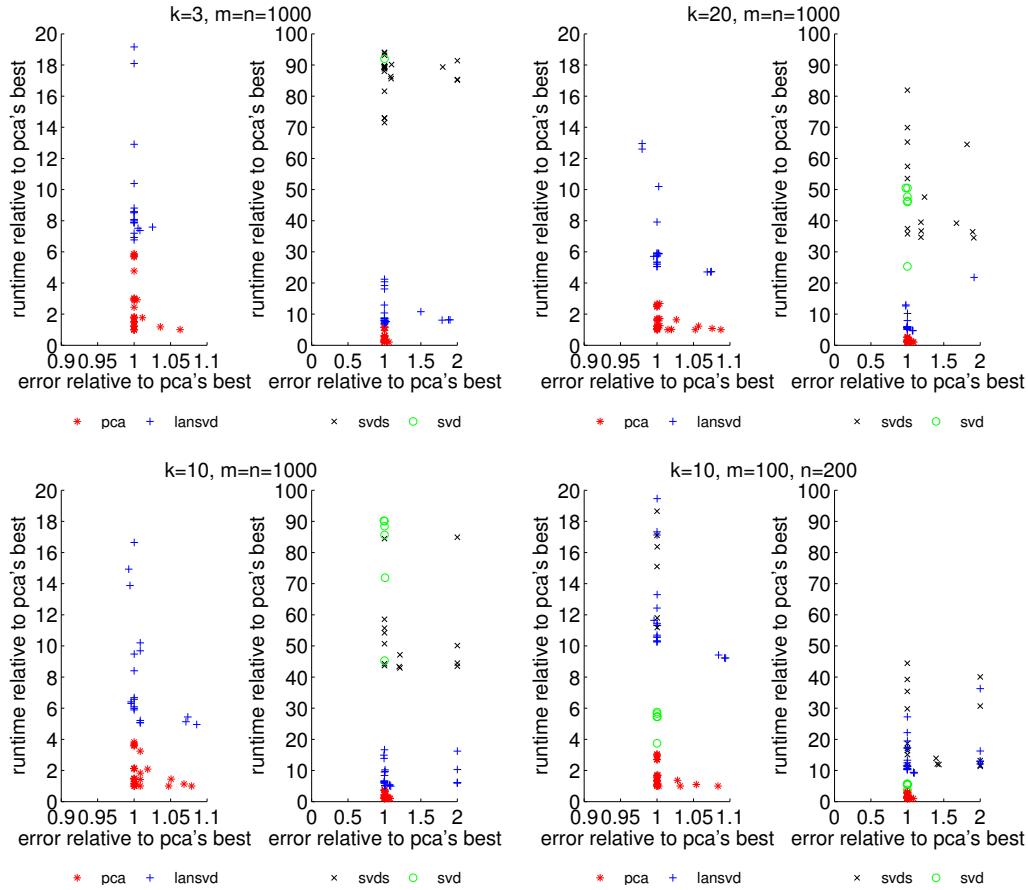


Fig. 1. Results for dense matrices

$m = n = 100000$ , since the available memory was insufficient for running MATLAB's built-in implementation. Clearly `pca` is far more efficient. Some extra power/subspace iterations are necessary to yield good accuracy; except for  $m = n = 100000$ , using only `its = 2` extra power/subspace iterations yields very nearly optimal accuracy, whereas `pca0its` (`pca` with `its = 0`) produces very inaccurate approximations.

The computations used MATLAB 8.3.0.532 (R2014a) on a four-processor machine, with each processor being an Intel Xeon E5-2680 v2 containing 10 cores, where each core operated at 2.8 GHz, with 25.6 MB of L2 cache. We did not consider the MATLAB Statistics Toolbox's own `pca`, `princomp`, and `pcacov`, as these compute all singular values and singular vectors (not only those relevant for low-rank approximation), just like MATLAB's built-in `svd` (in fact, these other functions call `svd`).

## 8. PERFORMANCE FOR SPARSE MATRICES

We compute rank- $k$  approximations to each real  $m \times n$  matrix  $A$  from the University of Florida sparse matrix collection of Davis and Hu [2011] with  $200 < m < 2000000$  and  $200 < n < 2000000$ , such that the original collection provides no right-hand side for use in solving a linear system with  $A$  (matrices for use in solving a linear system tend to be so well-conditioned that forming low-rank approximations makes no sense).

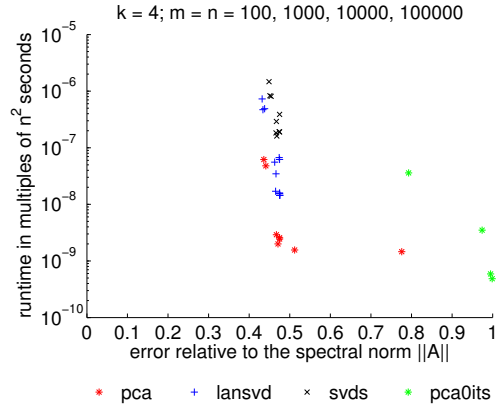


Fig. 2. Importance of power/subspace iterations

For each of the six parameter settings displayed in Figure 3 (these settings are  $10^{-3} \leq \alpha \leq 10^{-2}$ , as well as  $10^{-5} \leq \alpha \leq 10^{-4}$  and  $10^{-7} \leq \alpha \leq 10^{-6}$ , for both  $k = 10$  and  $k = 100$ , where  $\alpha = [(\text{number of nonzeros}) / (mn)] \cdot [k / \max(m, n)]$ ), we plot the spectral-norm errors and runtimes for `pca` (our code) and `lansvd` (PROPACK of Larsen [2001]). For `pca`, we vary the parameter specifying the number of iterations as `its = 2, 5, 8`; we leave the oversampling parameter  $l$  that specifies the number of random vectors whose entries are i.i.d. at the default,  $l = k + 2$ . For `lansvd`, we vary the tolerance for convergence as `tol = 10-5, 1, 103`. The red asterisks correspond to `pca` and the blue “plus signs” correspond to `lansvd`. Please note that `lansvd` may return entirely erroneous results without warning, as indicated in Section 6.

For reference, the rank of the approximation being constructed is  $k$ , and the matrix  $A$  being approximated is  $m \times n$ . The plotted accuracy is the spectral norm of the difference between  $A$  and the computed rank- $k$  approximation; `pca`’s error was never greater than twice the best for either algorithm for any setting of parameters. Each plot in Figure 3 appears twice, once with `lansvd` on top of `pca`, and once with `pca` on top of `lansvd`. Figure 3 indicates that neither `pca` nor `lansvd` is uniformly superior for sparse matrices.

We also use MATLAB’s built-in `svds` to compute rank- $k$  approximations to each real  $m \times n$  matrix  $A$  from the University of Florida collection of Davis and Hu [2011] with  $200 < m < 20000$  and  $200 < n < 20000$ , such that the original collection provides no right-hand side for use in solving a linear system with  $A$  (matrices for use in solving a linear system tend to be so well-conditioned that forming low-rank approximations makes no sense). We report this additional test since there was insufficient memory for running `svds` on the larger sparse matrices, so we could not include results for `svds` in Figure 3.

For each of the two parameter settings displayed in Figure 4 (namely,  $k = 10$  and  $k = 100$ ), we plot the spectral-norm errors and runtimes for `pca` (our code), `lansvd` (PROPACK of Larsen [2001]), and MATLAB’s built-in `svds` (ARPACK of Lehoucq et al. [1998]). For `pca`, we vary the parameter specifying the number of iterations, `its = 2, 5, 8`; we leave the oversampling parameter  $l$  that specifies the number of random vectors whose entries are i.i.d. at the default,  $l = k + 2$ . For `lansvd`, we vary the tolerance for convergence as `tol = 10-5, 1, 103`. For `svds`, we vary the tolerance as for `lansvd`, but with  $10^{-6}$  in place of  $10^{-5}$  (`svds` requires a tighter tolerance than `lansvd` to attain the best accuracy). The red asterisks correspond to `pca`, the blue “plus signs” correspond to `lansvd`, and the black “times signs” correspond to `svds`. Please note that `lansvd`

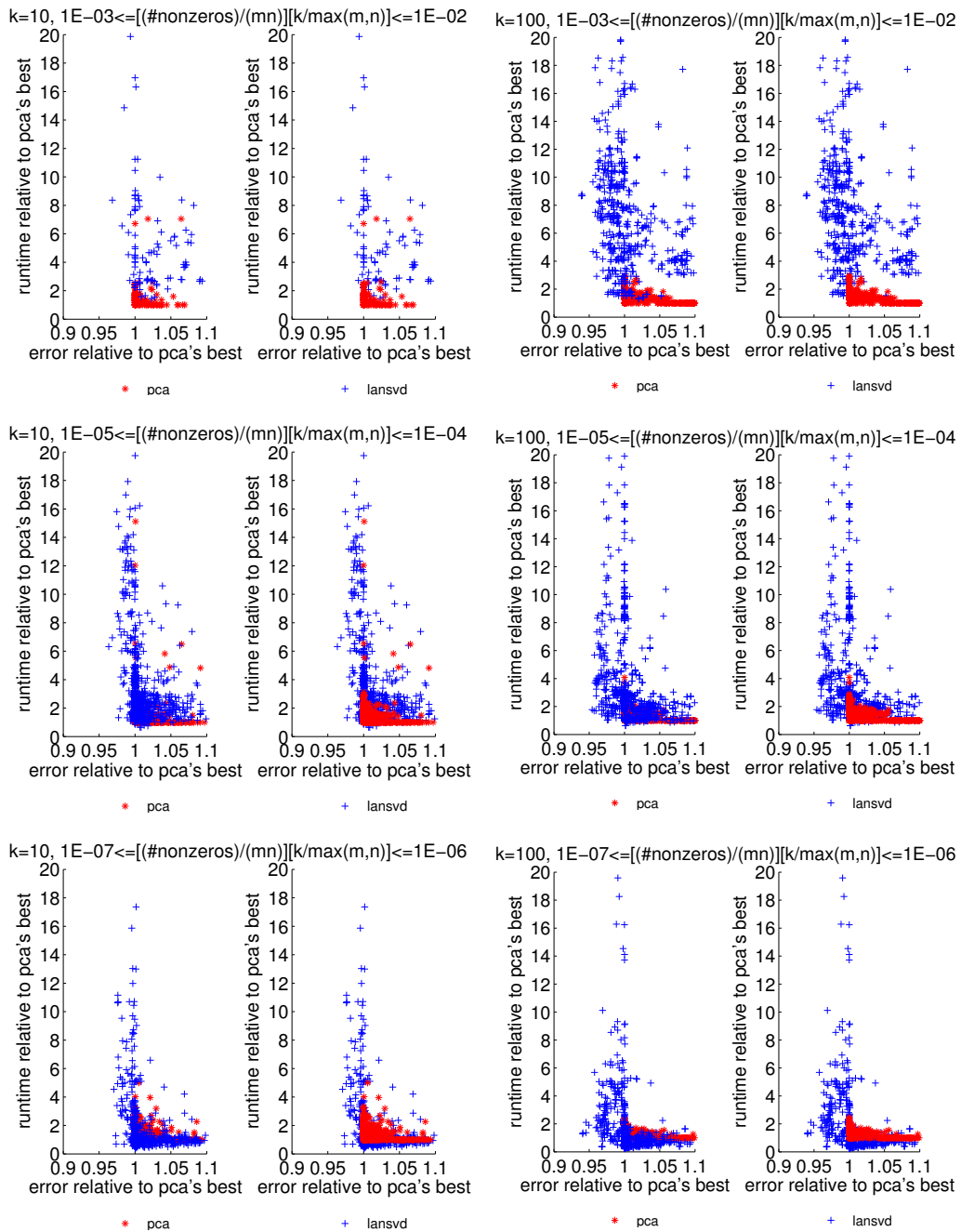


Fig. 3. pca vs. lansvd for sparse matrices

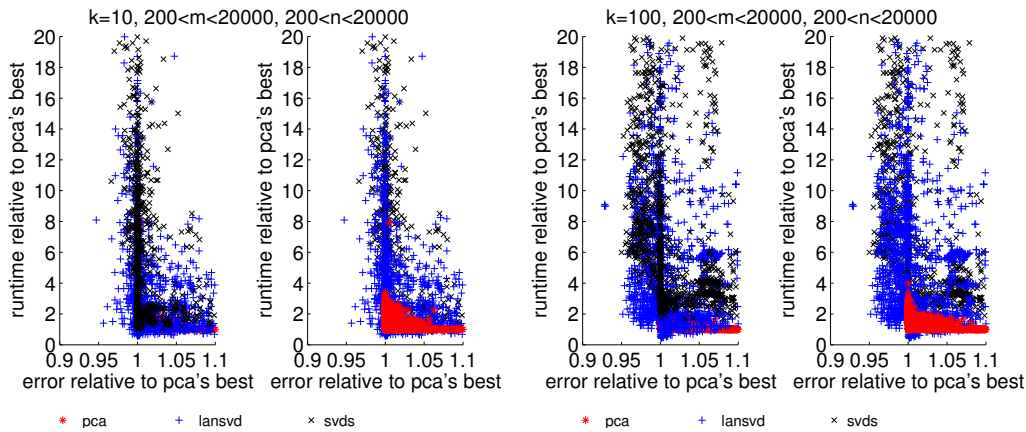


Fig. 4. svds vs. lansvd vs. pca for small sparse matrices

may return entirely erroneous results without warning, as indicated in Section 6. The plotted accuracy is the spectral norm of the difference between  $A$  and the computed rank- $k$  approximation; pca's error was always at most twice the best for any of the three algorithms for any setting of parameters. Each plot in Figure 4 appears twice, once with svds on top of pca, and once with pca on top of lansvd on top of svds. In Figure 4, pca generally exhibits higher performance than svds.

The computations used MATLAB 8.3.0.532 (R2014a) on a four-processor machine, with each processor being an Intel Xeon E5-2680 v2 containing 10 cores, where each core operated at 2.8 GHz, with 25.6 MB of L2 cache. We did not consider the MATLAB Statistics Toolbox's own "pca," "princomp," and "pcacov," as these compute all singular values and singular vectors (not only those relevant for low-rank approximation), just like MATLAB's built-in svd (in fact, these other functions call svd).

## 9. CONCLUSION

On strictly serial processors with no complicated caching (such as the processors of many decades ago), the most careful implementations of Lanczos iterations by Larsen [2001] and others could likely attain performance nearing the randomized methods', unlike competing techniques such as the power method or the closely related nonlinear iterative partial least squares (NIPALS) of Wold [1966]. The randomized methods can attain much higher performance on parallel and distributed processors, and generally are easier to use — setting their parameters properly is trivial (defaults are fine), in marked contrast to the wide variance in performance of the classical schemes with respect to inputs and parameter settings. Furthermore, despite decades of research on Lanczos methods, the theory for the randomized algorithms is more complete and provides strong guarantees of excellent accuracy, whether or not there exist any gaps between the singular values. With regard to principal component analysis for low-rank approximation, Lanczos iterations are like complicated, inherently serial heuristics for trying to emulate the reliable and more easily parallelized randomized methods. The randomized algorithms probably should be the methods of choice for computing the low-rank approximations in principal component analysis, when implemented and validated with consideration for the developments in Sections 3–6 above.

## SOFTWARE

Our MATLAB implementation is available at <http://tygert.com/software.html>

## REFERENCES

- Alliance for Telecommunications Industry Solutions Committee PRQC. 2011. *ATIS Telecom Glossary, American National Standard T1.523*. Alliance for Telecommunications Industry Solutions (ATIS), American National Standards Institute (ANSI), Washington, DC.
- Edward Anderson, Zhaojun Bai, Christian Bischof, Laura Susan Blackford, James Demmel, Jack Dongarra, Jeremy Du Croz, Anne Greenbaum, Sven Hammarling, Alan McKenney, and Daniel Sorensen. 1999. *LAPACK User's Guide*. SIAM, Philadelphia, PA.
- Haim Avron, Costas Bekas, Christos Boutsidis, Kenneth Clarkson, Prabhanjan Kambadur, Giorgos Kollias, Michael Mahoney, Ilse Ipsen, Yves Ineichen, Vikas Sindhwani, and David Woodruff. 2014. *LibSkylark: Sketching-Based Matrix Computations for Machine Learning*. IBM Research, in collaboration with Bloomberg Labs, NCSU, Stanford, UC Berkeley, and Yahoo Labs. Available at <http://xdata-skylark.github.io/libskylark>.
- Timothy A. Davis and Yifan Hu. 2011. The University of Florida sparse matrix collection. *ACM Trans. Math. Software* 38, 1 (2011), 1:1–1:25.
- Gene Golub and Charles Van Loan. 2012. *Matrix Computations* (4th ed.). Johns Hopkins University Press.
- Nathan Halko, Per-Gunnar Martinsson, and Joel Tropp. 2011. Finding structure with randomness: probabilistic algorithms for constructing approximate matrix decompositions. *SIAM Rev.* 53, 2 (2011), 217–288.
- Jacek Kuczyński and Henryk Woźniakowski. 1992. Estimating the largest eigenvalue by the power and Lanczos algorithms with a random start. *SIAM J. Matrix Anal. Appl.* 13, 4 (1992), 1094–1122.
- Rasmus Larsen. 2001. Combining implicit restart and partial reorthogonalization in Lanczos bidiagonalization. Presentation at U.C. Berkeley, sponsored by Stanford's Scientific Computing and Computational Mathematics (succeeded by the Institute for Computational and Mathematical Engineering). Available at <http://sun.stanford.edu/~rmunk/PROPACK/talk.rev3.pdf>.
- Richard Lehoucq, Daniel Sorensen, and Chao Yang. 1998. *ARPACK User's Guide: Solution of Large-Scale Eigenvalue Problems with Implicitly Restarted Arnoldi Methods*. SIAM, Philadelphia, PA.
- Frank McSherry and Dimitris Achlioptas. 2007. Fast computation of low-rank matrix approximations. *J. ACM* 54, 2 (April 2007), 1–19.
- Srinivas Rachakonda, Rogers F. Silva, Jingyu Liu, and Vince Calhoun. 2014. Memory-efficient PCA approaches for large-group ICA. (2014). fMRI Toolbox, Medical Image Analysis Laboratory, University of New Mexico.
- Gil Shabat, Yaniv Shmueli, and Amir Averbuch. 2013. *Randomized LU decomposition*. Technical Report 1310.7202. arXiv.
- Rafi Witten and Emmanuel Candès. 2014. Randomized algorithms for low-rank matrix factorizations: sharp performance bounds. *Algorithmica* (2014). To appear. DOI: 10.1007/s00453-014-9891-7.
- Herman Wold. 1966. Estimation of principal components and related models by iterative least squares. In *Multivariate Analysis*, Parachuri R. Krishnaiah (Ed.). Academic Press, 391–420.
- David Woodruff. 2014. *Sketching as a Tool for Numerical Linear Algebra*. Foundations and Trends in Theoretical Computer Science, Vol. 10. Now publishers.